

# ENDOW IOWA | TAX CREDIT PROGRAM

The Endow Iowa Tax Credit program was created in 2004 and since then has leveraged over \$240 million in endowment gifts to support Iowa communities and charitable causes. This program has made nearly \$55 million in tax credits available to a wide variety of donors. For the past five years, the annual tax credit limit has been \$6 million per year and each year every tax credit has been distributed. The program is administered by the Iowa Economic Development Authority (IEDA) in collaboration with the Iowa Council of Foundations (ICoF).

## ENDOW IOWA TAX CREDITS:

- |   |  |   |   |   |
|---|--|---|---|---|
| <p>1</p> <p><b>OFFER A 25% STATE INCOME TAX CREDIT</b></p> <p>to donors who make gifts to an endowed fund at a qualified community foundation* in Iowa;</p> | <p>2</p> <p><b>ARE AWARDED ON A</b></p> <p>first-come, first-served basis;</p> | <p>3</p> <p><b>OFFER A MAXIMUM ANNUAL CREDIT OF</b></p> <p>\$300,000 per taxpayer &amp; \$600,000 per couple;</p> | <p>4</p> <p><b>CAN BE CLAIMED BY</b></p> <p>individuals, businesses, or financial institutions;</p> | <p>5</p> <p><b>AND ARE NOT</b></p> <p>transferable or refundable.</p> |
|---|--|---|---|---|

\*Qualified community foundations are confirmed in compliance with the National Standards for U.S. Community Foundations.

## THIS INNOVATIVE STATEWIDE PROGRAM:

- |   |   |
|---|---|
|  <p><b>STRENGTHENS</b> communities through philanthropy;</p>                               |  <p><b>PROVIDES</b> a new opportunity for collaboration;</p>                                 |
|  <p><b>LEVERAGES</b> 4 private dollars for every public dollar invested in the program;</p> |  <p><b>ENCOURAGES</b> contributions that provide support now and in the future;</p>          |
|  <p><b>CREATES</b> charitable giving vehicles in communities of all sizes;</p>             |  <p><b>DEVELOPS</b> local community leadership; and</p>                                     |
|  <p><b>KEEPS DOLLARS IN IOWA</b> and invests in Iowa's future;</p>                          |  <p>positions Iowa as a <b>NATIONAL LEADER</b> in supporting and promoting philanthropy.</p> |

*Endow Iowa grows assets for the future of our state.*

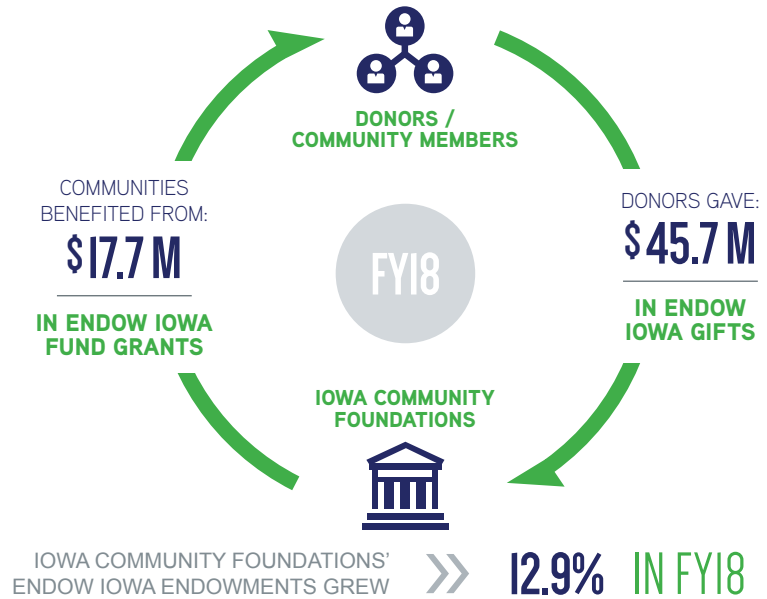
## GROWTH OF ENDOWED ASSETS AT ACCREDITED COMMUNITY FOUNDATIONS AND THEIR COUNTY AFFILIATES:

**2005** \$ 95,657,632    >>    **2018** \$838,497,115    >>    **TOTAL GROWTH** \$742,839,483    =    **776% GROWTH**

Endow Iowa helps donors and community foundations invest in our state.

Today **4,107** nonprofits and charitable causes in Iowa are supported by Endow Iowa endowment fund payouts annually.

Gifts from community foundation endowments support charitable causes that advance the state of Iowa's priorities such as economic development, education, arts and culture and so much more.



The \$6M tax credit cap has been reached earlier and earlier each year.



**DEMAND CONTINUES TO GROW FOR THIS WORTHWHILE PROGRAM!**

**QUALIFIED IOWA COMMUNITY FOUNDATIONS**

- Cedar Falls Community Foundation
- Community Foundation of Carroll County
- Community Foundation of Greater Des Moines
- Community Foundation of Greater Dubuque
- Community Foundation of Greater Muscatine
- Community Foundation of Johnson County
- Community Foundation of Northeast Iowa
- Community Foundations of Southwest Iowa/Omaha Community Foundation
- Fort Dodge Community Foundation & United Way

- Greater Cedar Rapids Community Foundation
- Greater Poweshiek Community Foundation
- Keokuk Area Community Foundation
- Pella Community Foundation
- Pottawattamie County Community Foundation
- Quad Cities Community Foundation
- Siouxland Community Foundation
- South Central Iowa Community Foundation