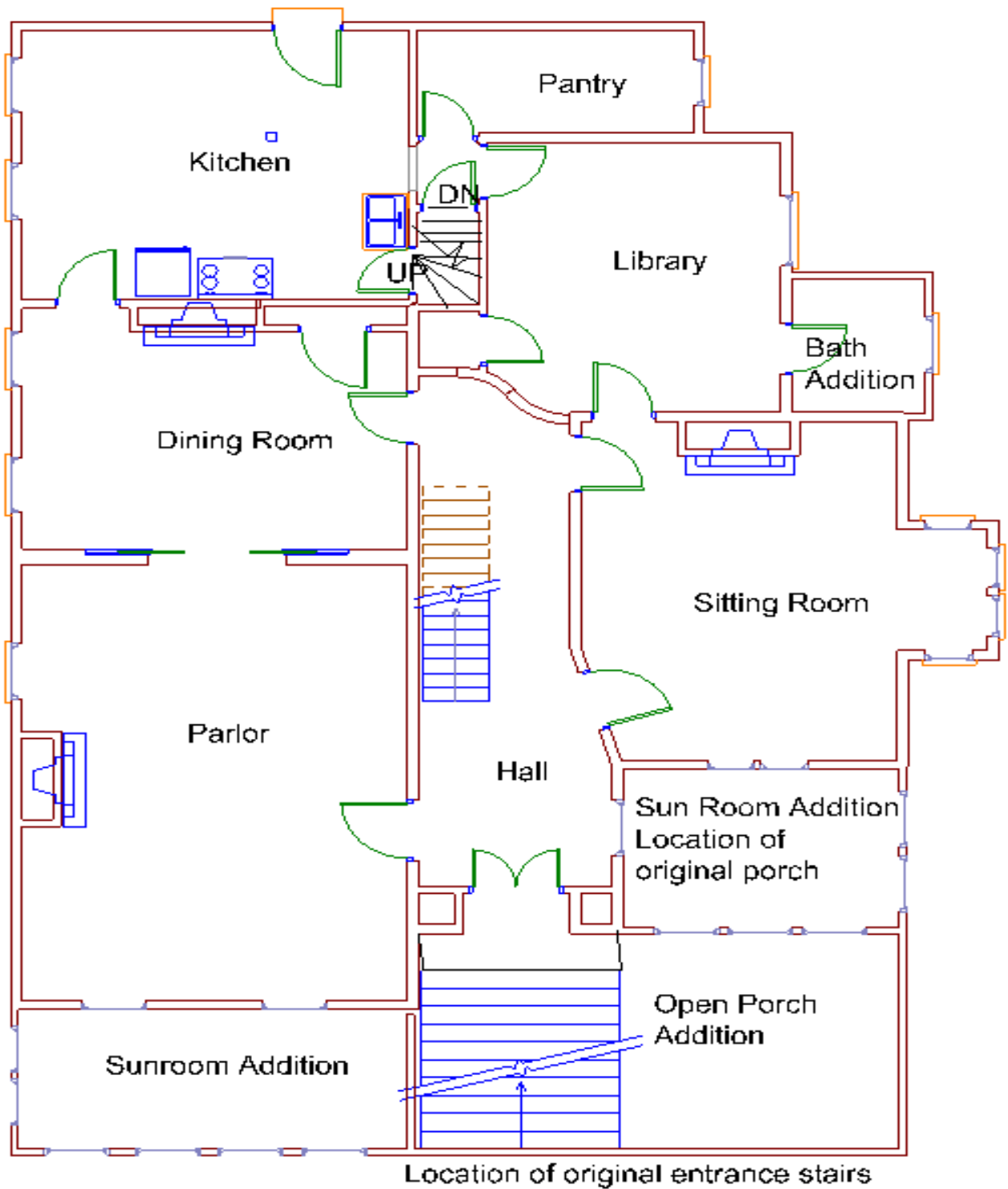


Lambrite-Iles-Petersen House
510 W Sixth Street
Davenport, Iowa

Built 1857

John C. Cochrane, Architect



Drawn By David L. Cordes
For Gateway Redevelopment Group
& The City of Davenport, Iowa
No rights reserved – placed in the public domain

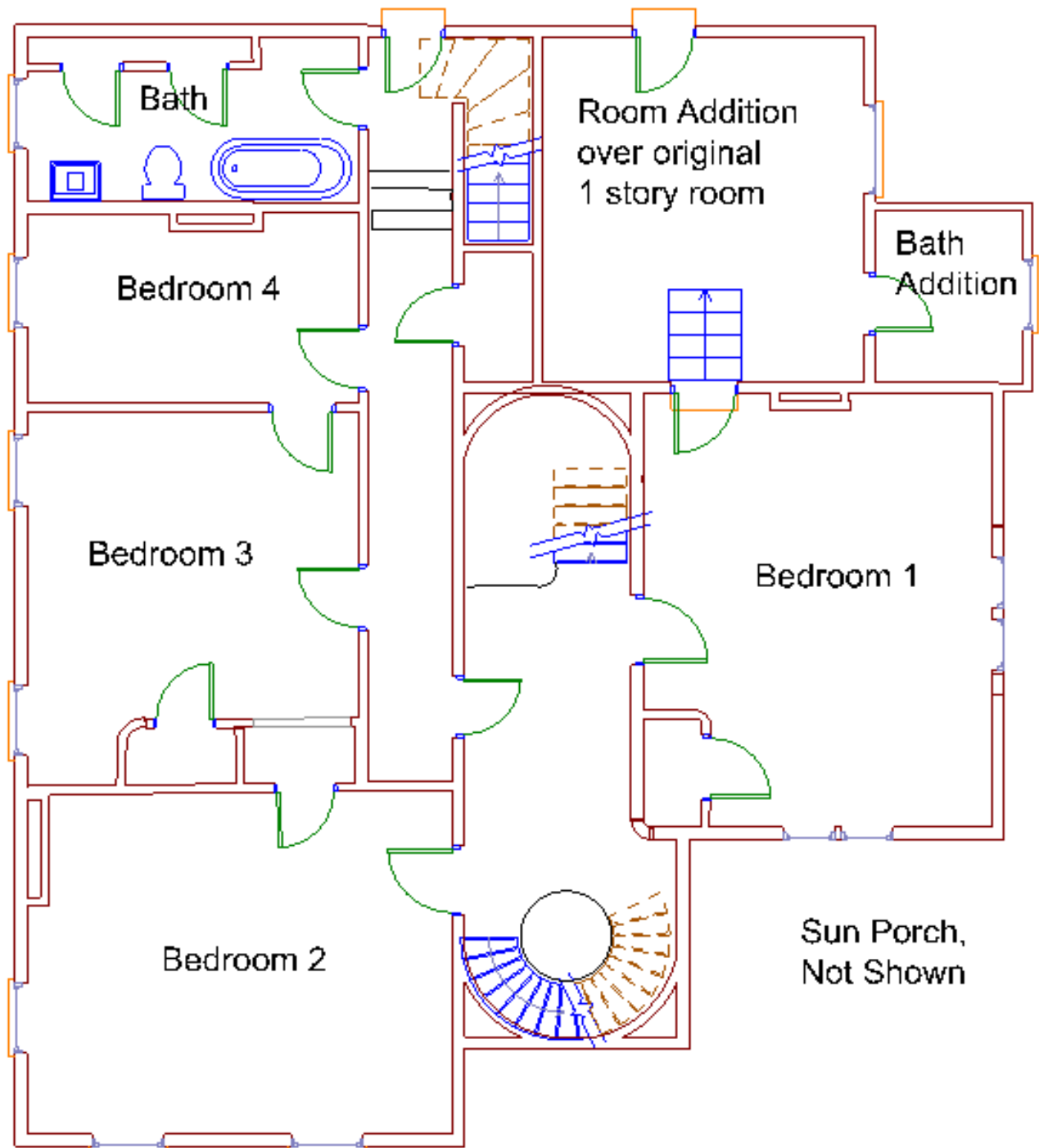
First Floor

November 11, 2014

Lambrite-Iles-Petersen House
510 W Sixth Street
Davenport, Iowa

Built 1857

John C. Cochrane, Architect



Drawn By David L. Cordes
For Gateway Redevelopment Group
& The City of Davenport, Iowa
No rights reserved – placed in the public domain

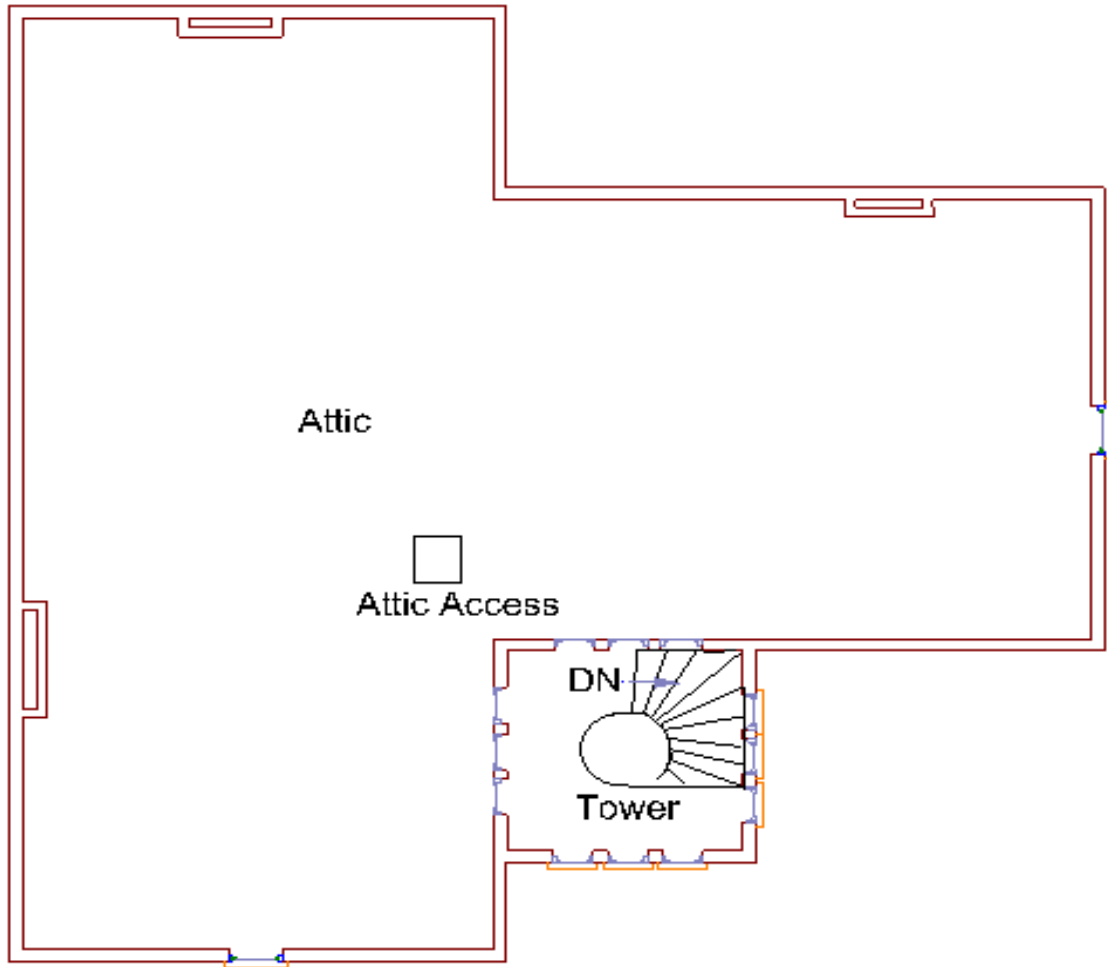
Second Floor

November 11, 2014

Lambrite-Iles-Petersen House
510 W Sixth Street
Davenport, Iowa

Built 1857

John C. Cochrane, Architect



Drawn By David L. Cordes
For Gateway Redevelopment Group
& The City of Davenport, Iowa
No rights reserved – placed in the public domain

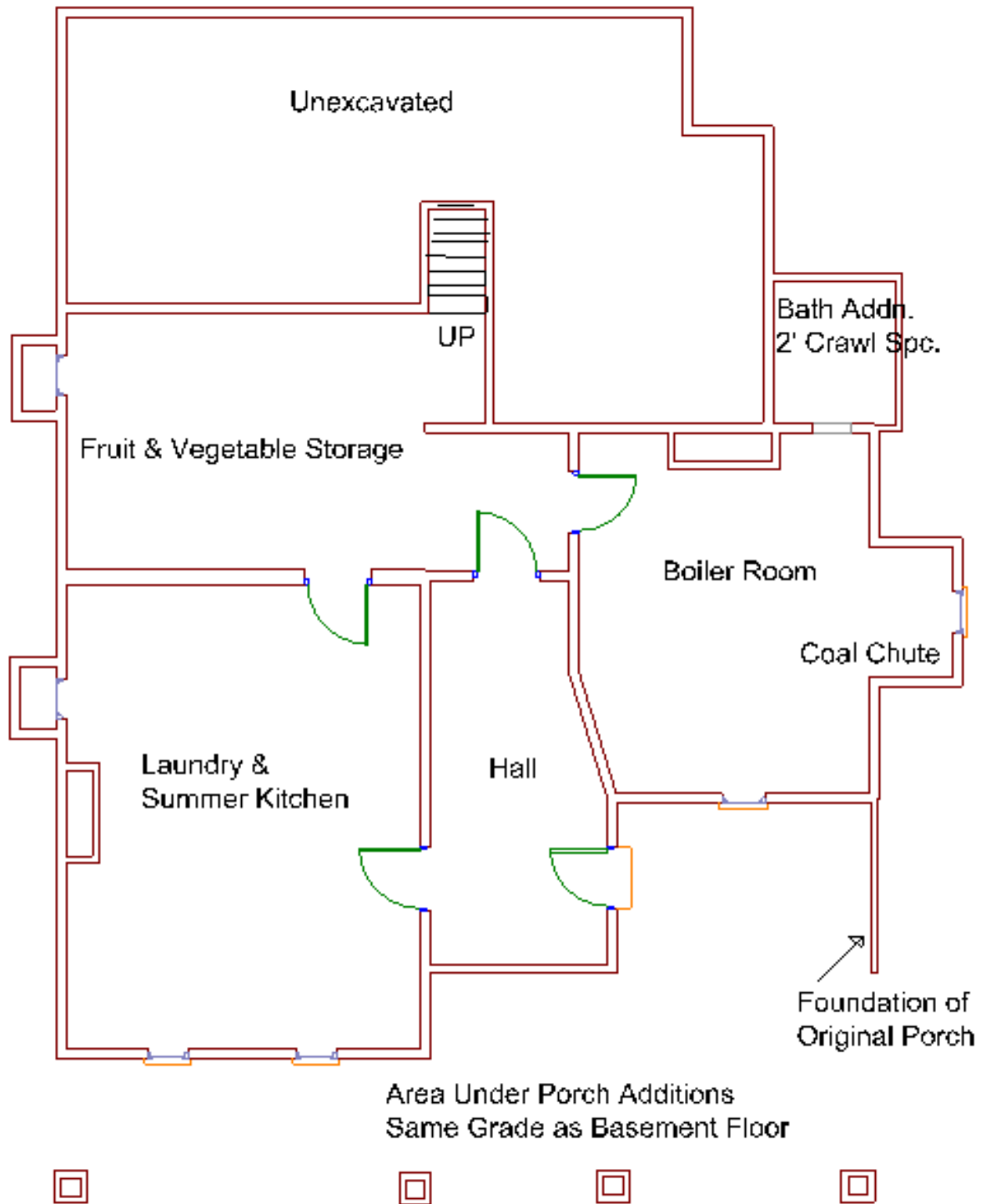
Third Floor

November 11, 2014

Lambrite-Iles-Petersen House
510 W Sixth Street
Davenport, Iowa

Built 1857

John C. Cochran, Architect



Drawn By David L. Cordes
For the Gateway Redevelopment Group
& the City of Davenport, Iowa
No rights reserved – placed in the public domain

Basement

November 11, 2014